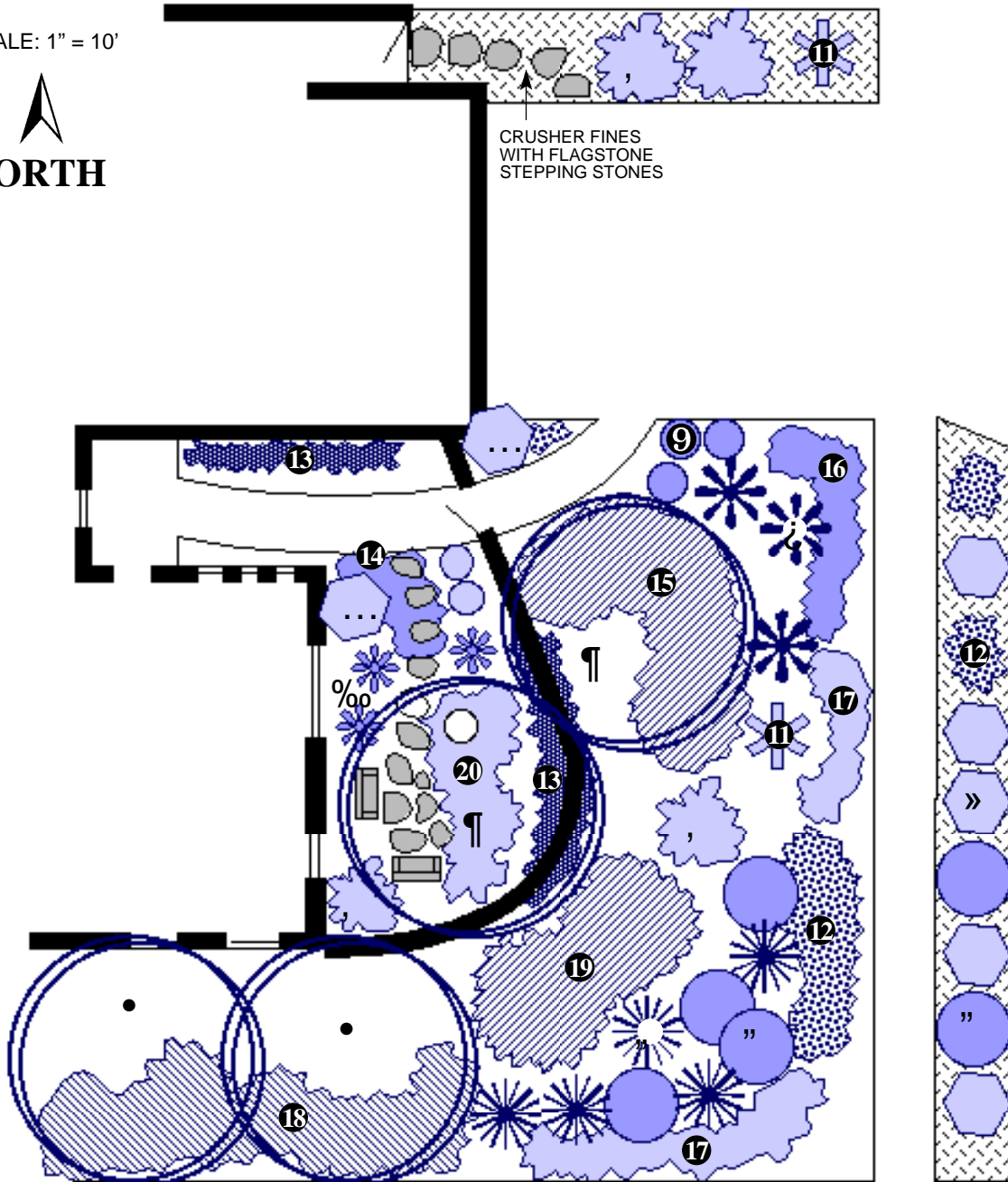


Kaleidoscope

Vivid Blooms Create a Kaleidoscope of Color

SCALE: 1" = 10'



Plant Legend

Trees & Shrubs

Flowering Plants

1. Desert Willow
2. Vitex
3. Dwarf Butterflybush
4. Red Yucca–Hesperaloe
5. Desert Globemallow
6. Desert Sage
7. 'Arp' Rosemary
8. Cherry Sage
9. Lavender

10. Yellow Hesperaloe
11. Giant Four O'Clock
12. Desert Zinnia
13. Lady Bank's Rose

Groundcovers

14. Yellow Iceplant
15. Grayleaf Cotoneaster
16. Purple Iceplant
17. Catmint
18. Organ Mountain Evening Primrose
19. Cliff Rose
20. Creeping Germander

Color has a more dramatic impact in a garden if plants with strong flower colors are juxtaposed against one another. In this Kaleidoscope, the blue-purple blooms of Dwarf Butterfly Bush, Desert Sage, Catmint, Lavender and Vitex are contrasted by the rose-pink and magenta blooms of Desert Willow, Cherry Sage, Creeping Germander, Giant Four O'clock, Purple Iceplant, Red Yucca and Desert Globemallow. Yellow tones are provided by Desert Zinnia, Yellow Iceplant, Yellow Hesperaloe and Lady Banks Rose. Using several different plants with similar color palettes prolongs the blooming season and provides unity to the landscape.

While vivid color may be the appeal of the garden from spring through autumn, a landscape also needs “good bones”—enough evergreen foliage and shapely plant forms to provide interest when the blooming fireworks are over for the year. Rosemary, Lady Bank’s Rose, Cliffrose, Desert Sage, Hesperaloes and Cotoneaster all contribute seasonal flower color as well as evergreen foliage in a broad range of greens and silvers to carry the garden through the colder winter months. In addition to their colorful warm-season blooms, the curving trunks and branches of Desert Willow and Vitex add sculptural value all year.

Designed by Judith Phillips,
Bernardo Beach Native Plant Farm

FOR MORE INFORMATION ON THIS AND OTHER LANDSCAPES, CONTACT:



City of Albuquerque
Public Works Department
Water Resources Division
Water Conservation Office
768-3655

768-2477 TTY, or Relay NM 1-800-659-8331
www address: <http://www.cabq.gov/resources/>

Common Name	Botanical Name	Approx. Height	Approx. Spread	Light Exposure	Water Use
Catmint	<i>Nepeta mussini x faassenii</i>	8"	24"	sun/shade	medium
Cherry Sage (Autumn Sage)	<i>Salvia greggii</i>	2'	3'	sun/shade	medium
Cliffrose	<i>Cowania mexicana*</i>	8'	6'	full sun	low
Creeping Germander	<i>Teucrium chamaedrys</i>	12"	24"	sun/shade	medium
Desert Globemallow	<i>Sphaeralcea ambigua</i>	18"	24"	full sun	low
Desert Sage	<i>Salvia dorrii</i>	2'	3'	full sun	low
Desert Willow	<i>Chilopsis linearis</i>	20'	25'	full sun	low
Desert Zinnia	<i>Zinnia grandiflora</i>	4"	6"	full sun	low
Dwarf Butterfly Bush	<i>Buddleia davidii nanhoensis</i>	4-5'	4-5'	full sun	low +
Giant Four O'Clock	<i>Mirabilis multiflora</i>	4'	4'	full sun	low +
Grayleaf Cotoneaster	<i>Cotoneaster buxifolius</i>	2'	9'	full sun	medium
Lady Bank's Rose	<i>Rosa banksiae</i>	10'	10'	full sun	medium
Lavender	<i>Lavandula angustifolia</i>	3'	3'	sun/shade	medium
Organ Mountain Evening Primrose	<i>Oenothera organensis</i>	2'	4'	sun/shade	medium
Purple Iceplant	<i>Delosperma cooperi</i>	6"	18"	full sun	low
Red Yucca	<i>Hesperaloe parviflora</i>	3'	3'	sun/shade	medium
Rosemary 'Arp'	<i>Rosmarinus officinalis 'Arp'</i>	6'	6'	sun/shade	low +
Vitex (Chaste Tree)	<i>Vitex agnus-castus</i>	20'	20'	full sun	medium
Yellow Iceplant	<i>Delosperma nubigenum</i>	3"	18"	full sun	low
Yellow Hesperaloe	<i>Hesperaloe parviflora</i>	3'	4'	sun/shade	medium

* Cowania is sometimes listed as Purshia.