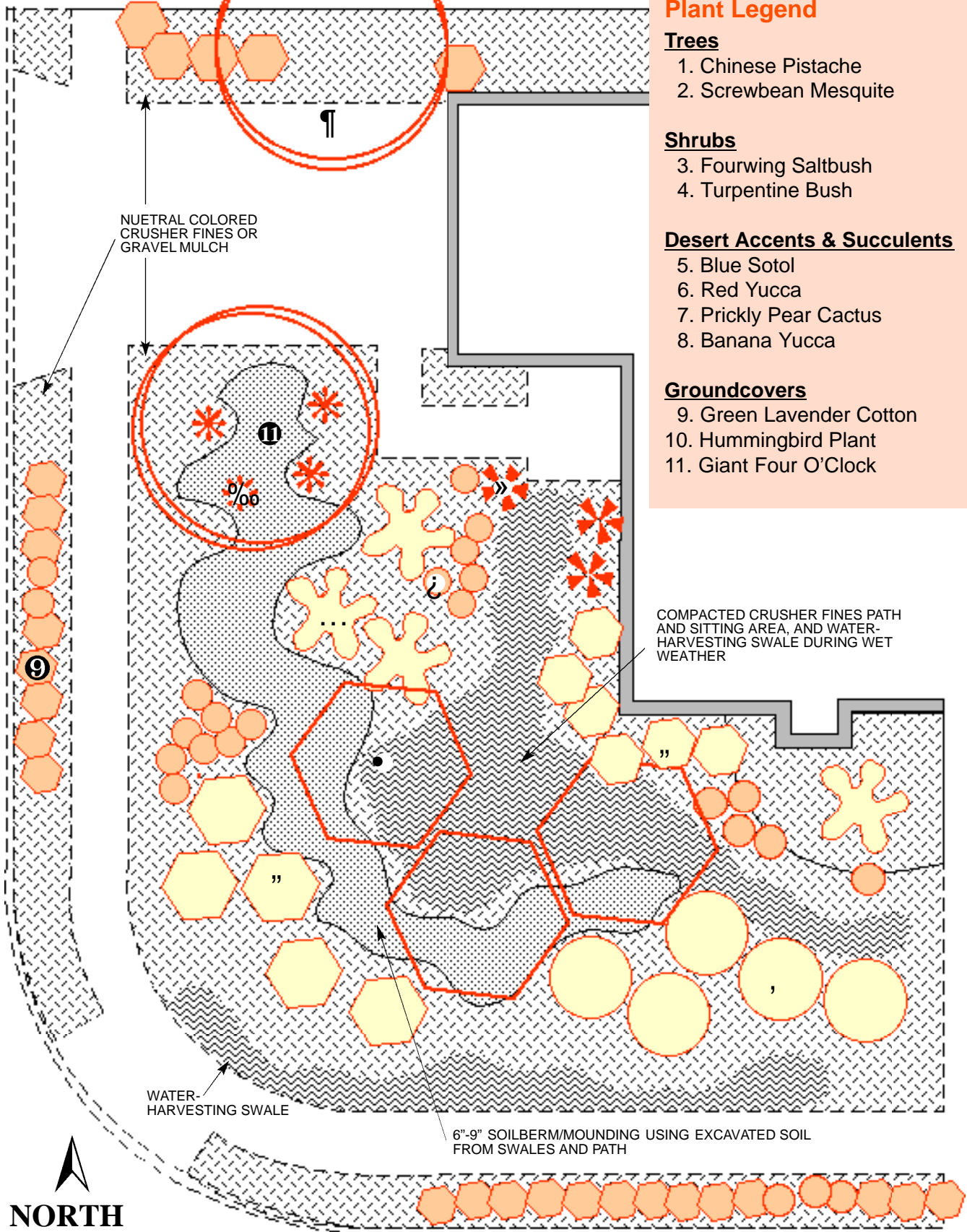


# Hotscapes

An Attractive Native Landscape that Loves Heat and Full Sun

SCALE: 1" = 10'



## Plant Legend

### Trees

1. Chinese Pistache
2. Screwbean Mesquite

### Shrubs

3. Fourwing Saltbush
4. Turpentine Bush

### Desert Accents & Succulents

5. Blue Sotol
6. Red Yucca
7. Prickly Pear Cactus
8. Banana Yucca

### Groundcovers

9. Green Lavender Cotton
10. Hummingbird Plant
11. Giant Four O'Clock

NUETRAL COLORED CRUSHER FINES OR GRAVEL MULCH

COMPACTED CRUSHER FINES PATH AND SITTING AREA, AND WATER-HARVESTING SWALE DURING WET WEATHER

WATER-HARVESTING SWALE

6"-9" SOILBERM/MOUNDING USING EXCAVATED SOIL FROM SWALES AND PATH



**M**any plants from higher elevations or moister areas struggle when subjected to the long, torrid, summers common in Albuquerque. The plants in this landscape are intended to thrive on heat, limited irrigation and minimal care—while exploding the popular myth that cacti and succulents look stark and don't belong near our homes. The Hotscapes design embraces the environmental and visual qualities of Albuquerque's high southwestern desert location. Two areas of compacted crusher fines serve as a combined pathway, informal sitting area and a channel to harvest water from the occasional storm. A low berm provides visual interest, keeping the plants dry that cannot tolerate much extra moisture.

Modeled after the strikingly attractive and often evergreen plant communities native to the edges of Albuquerque, this design provides a great deal of visual interest throughout the year. The open, irregular canopies of Chinese Pistache and Screwbean Mesquite provide filtered shade in summer and warming sunshine in the winter—an effect suggesting a desert arroyo. Fourwing Saltbush screens the view to the street and the dark, compact Turpentine Bush adds a pleasant fragrance with yellow fall flowers. The last, crucial ingredient to this design is the generous use of native desert accent plants, including the bold, blue-green forms of Sotol, Desert Prickly Pear, and Banana Yucca. These local signature plants are accented further with small masses of seasonal color from low perennials and groundcovers, attracting both hummingbirds and passing neighbors!

Designed by David Cristiani,  
Quercus+SW

**FOR MORE INFORMATION ON THIS AND OTHER LANDSCAPES, CONTACT:**



City of Albuquerque  
Public Works Department  
Water Resources Division  
Water Conservation Office  
768-3655

768-2477 TTY, or Relay NM 1-800-659-8331  
www address: <http://www.cabq.gov/resources/>

Common Name	Botanical Name	Approx. Height	Approx. Spread	Light Exposure	Water Use
Banana Yucca	<i>Yucca baccata</i>	4'	5'	full sun	low
Blue Sotol	<i>Dasyliirion wheeleri</i>	5'	4'	sun/shade	low
Chinese Pistache	<i>Pistachia chinensis</i>	60'	60'	full sun	medium
Fourwing Saltbush	<i>Artemisia canescens</i>	5'	6'	full sun	low
Giant Four O'Clock	<i>Mirabilis multiflora</i>	4'	4'	full sun	low +
Green Lavender Cotton	<i>Santolina chamaecyparissus</i>	2'	5'	full sun	low
Hummingbird Plant	<i>Zauschneria californica</i>	2'	3'	full sun	medium
Prickly Pear Cactus	<i>Opuntia specios</i>	4-6'	6-8'	full sun	low
Red Yucca	<i>Hesperaloe parviflora</i>	3'	3'	sun/shade	medium
Screwbean Mesquite	<i>Prosopis pubescens</i>	20'	20'	full sun	low+
Turpentine Bush	<i>Ericameria laricifolia</i>	3'	4'	full sun	low