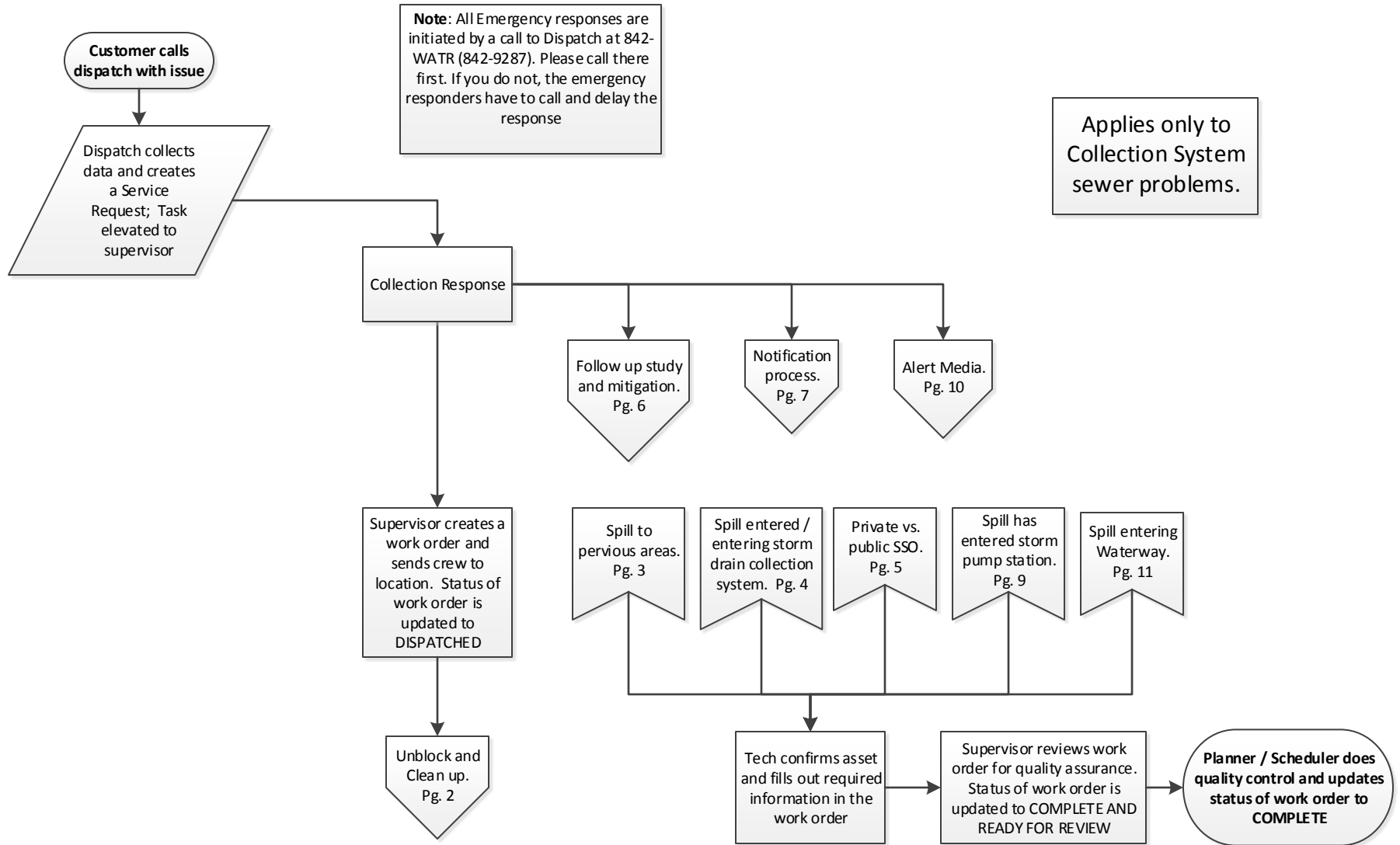


Overflow Emergency Response Plan

4-14-17

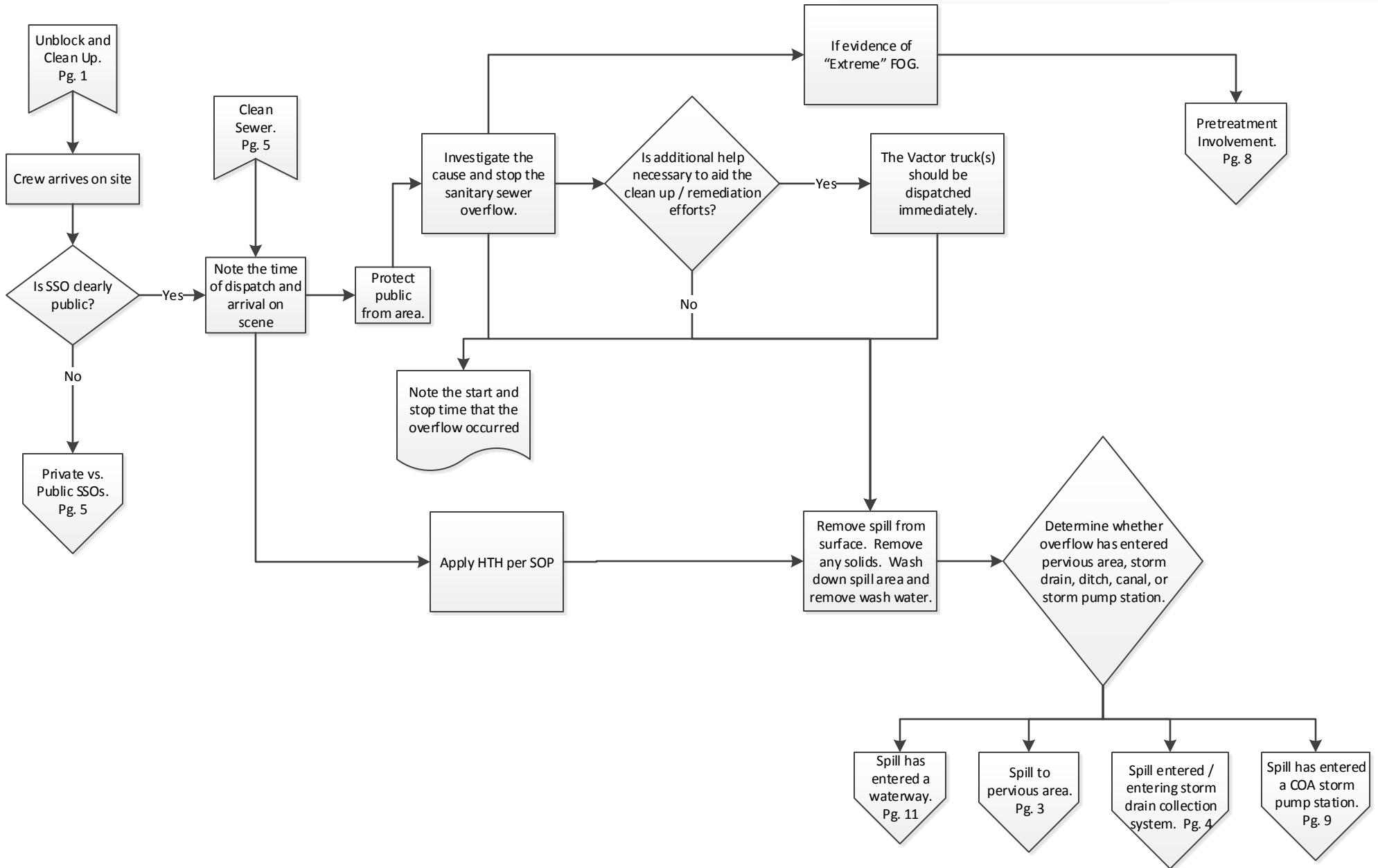
Albuquerque Bernalillo County Water Utility Authority

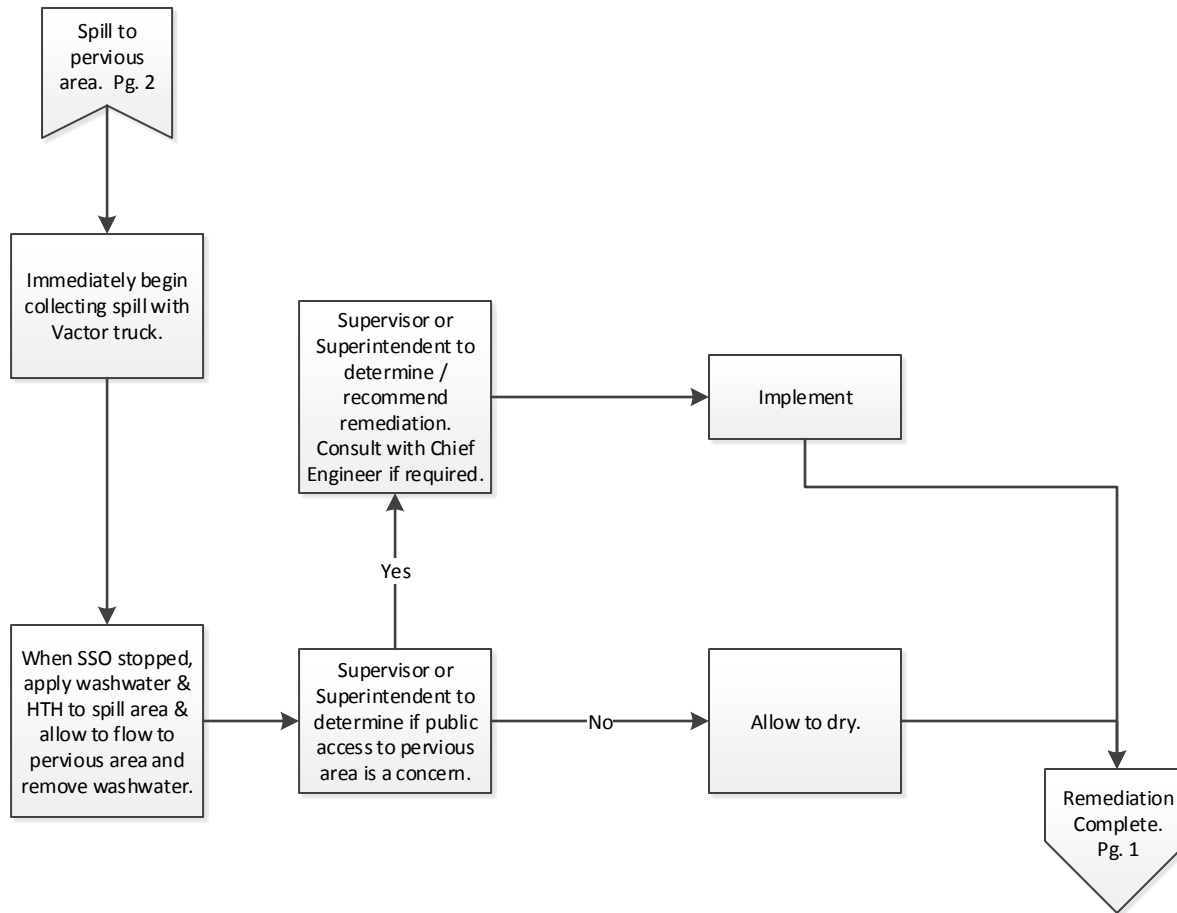


Overflow Emergency Response Plan

4-14-17

Albuquerque Bernalillo County Water Utility Authority

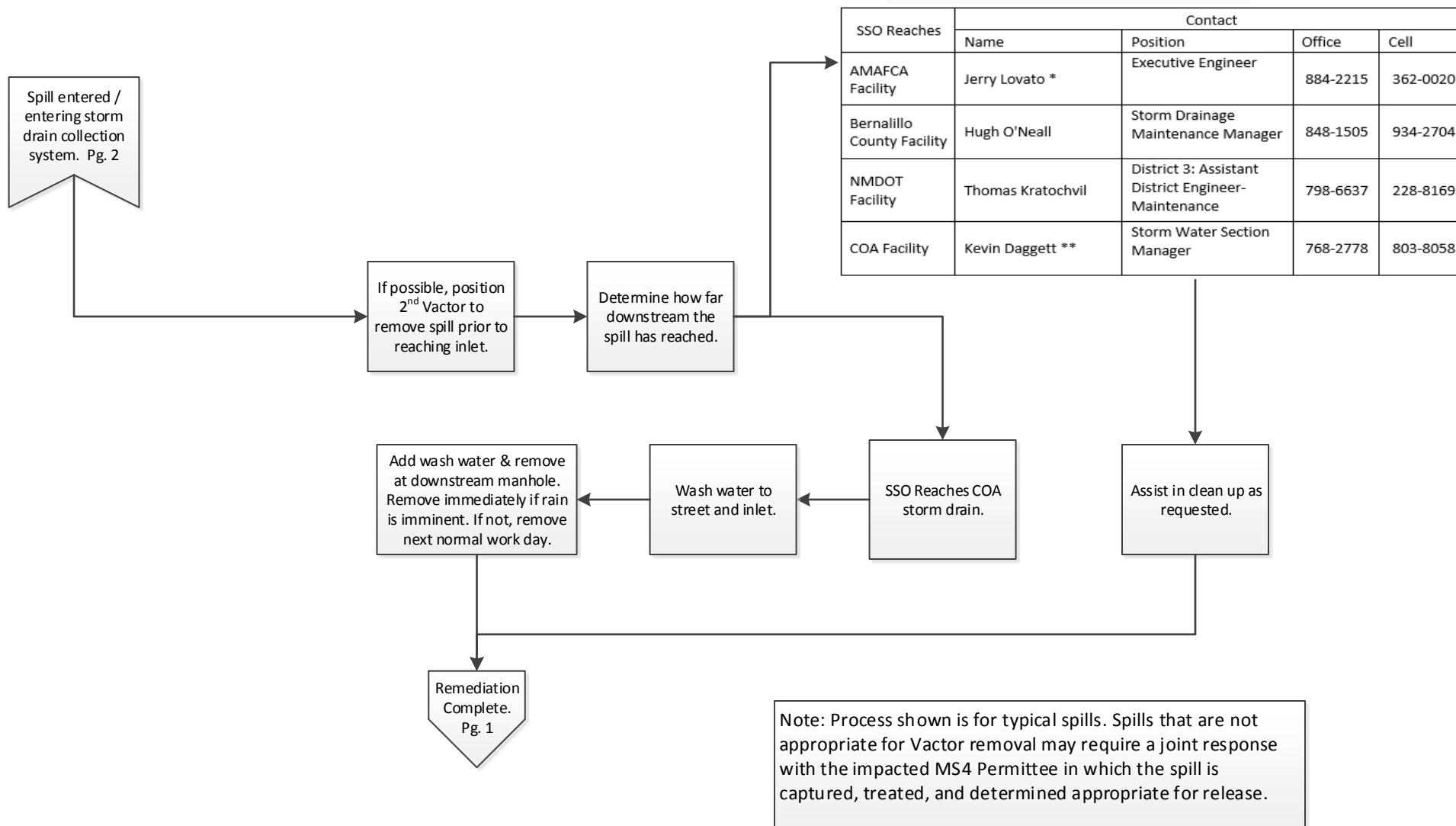




Overflow Emergency Response Plan

4-14-17

Albuquerque Bernalillo County Water Utility Authority



Note: Process shown is for typical spills. Spills that are not appropriate for Vactor removal may require a joint response with the impacted MS4 Permittee in which the spill is captured, treated, and determined appropriate for release.

*If Jerry Lovato is not immediately available, call:

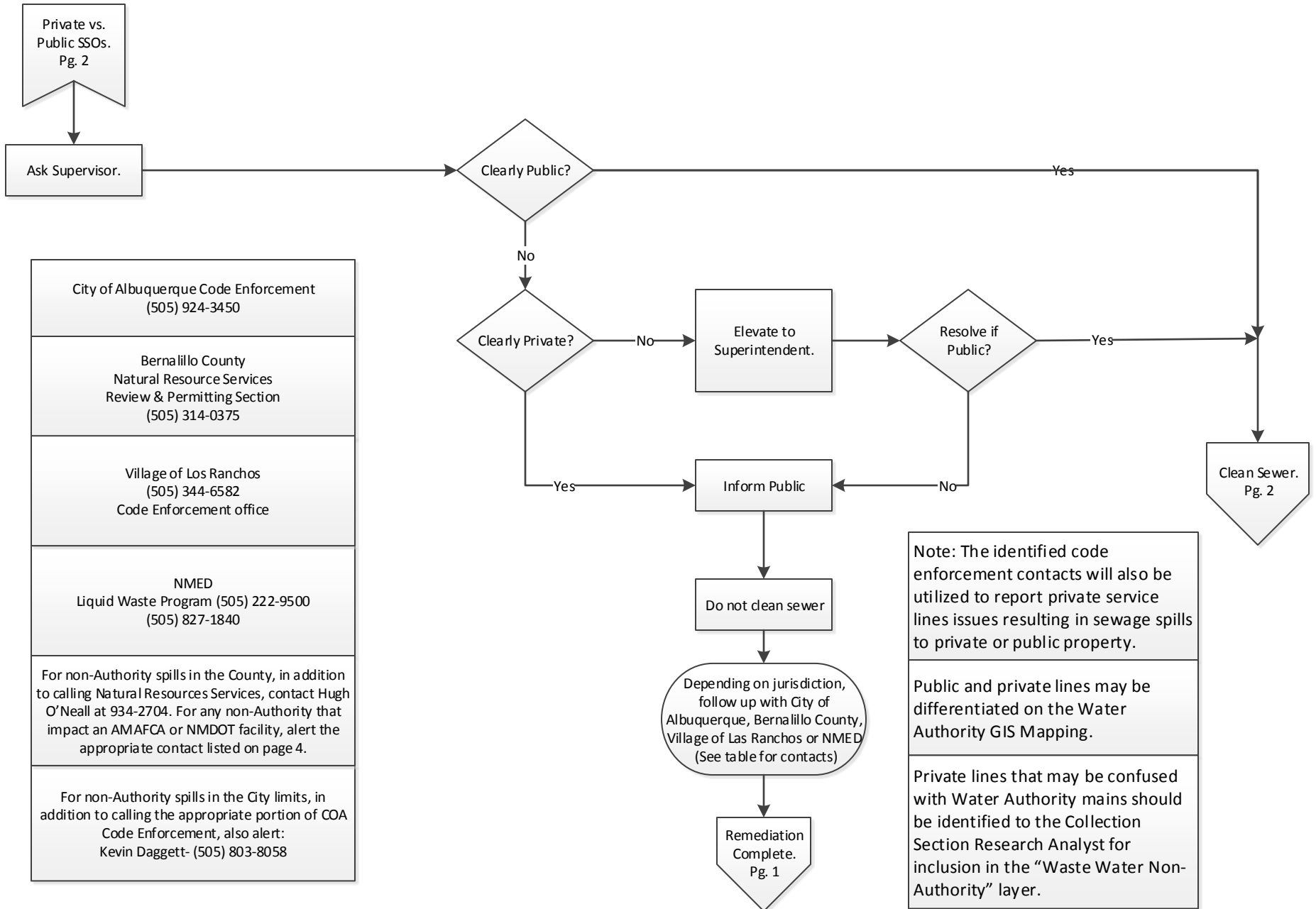
Nolan Bennett: Field Engineer (505) 301-6941
 Herman Gabaldon: Superintendent (505) 366-8209

**If Kevin Daggett is not immediately available, call:

Bryan Wolfe: Engr. Div. Manager (505) 250-7364
 Carl Rinckenberger: O&M Manager (505) 250-4334
 Daniel Tapia: O&M Supt (505) 228-6874

Overflow Emergency Response Plan

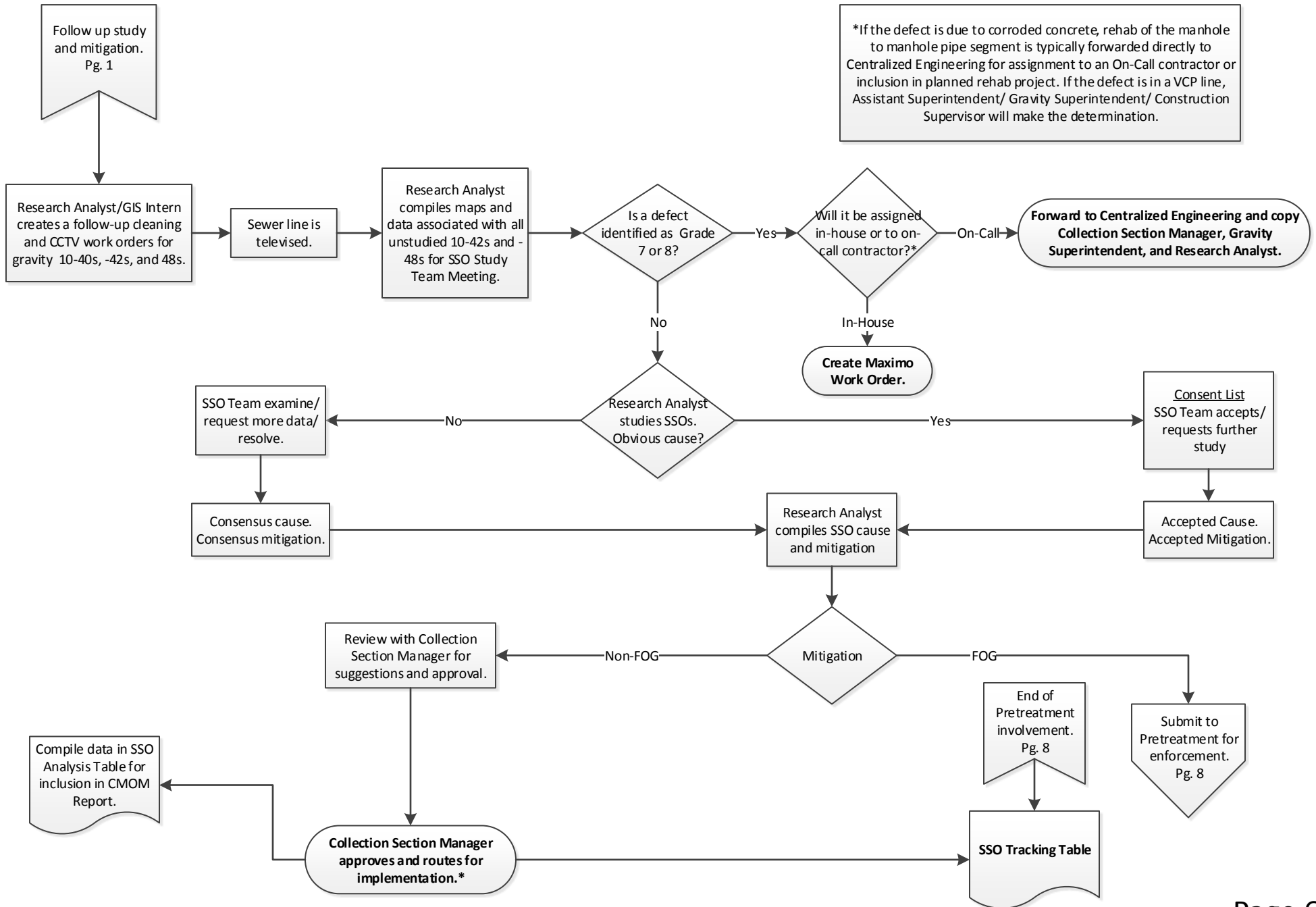
Albuquerque Bernalillo County Water Utility Authority



Overflow Emergency Response Plan

4-14-17

Albuquerque Bernalillo County Water Utility Authority

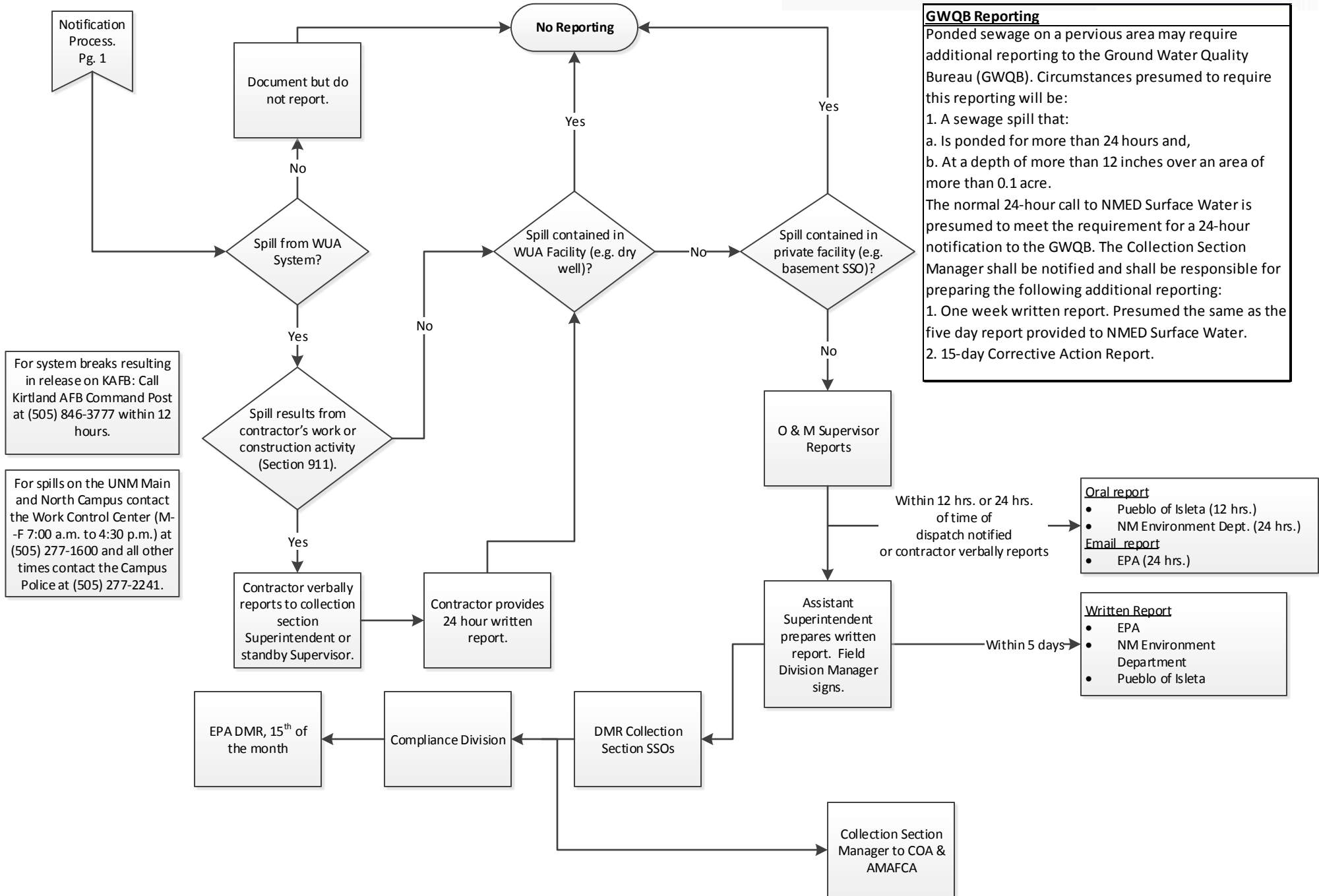


Overflow Emergency Response Plan

4-14-17

Albuquerque Bernalillo County Water Utility Authority

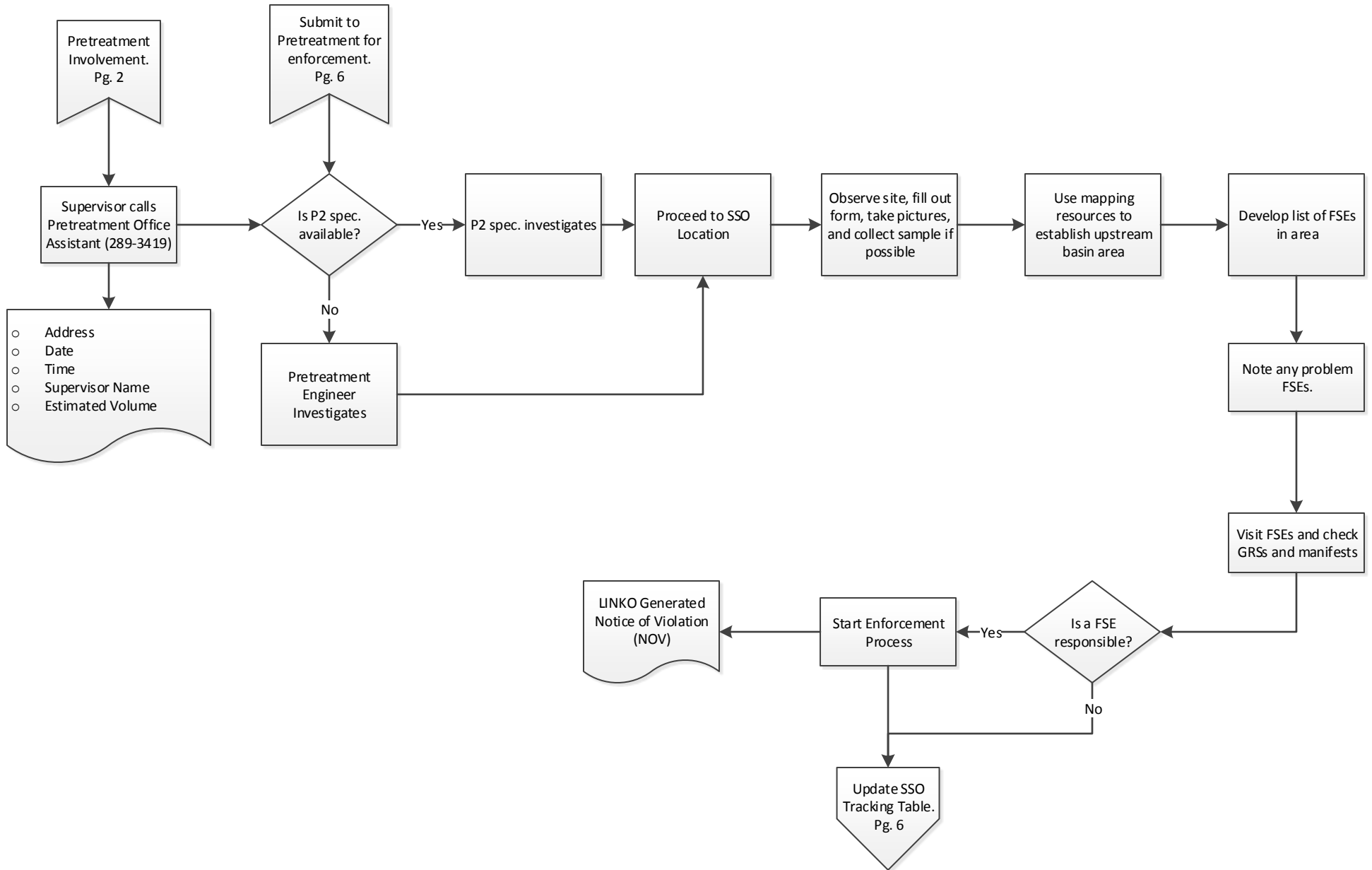
GWQB Reporting
 Pondered sewage on a pervious area may require additional reporting to the Ground Water Quality Bureau (GWQB). Circumstances presumed to require this reporting will be:
 1. A sewage spill that:
 a. Is ponded for more than 24 hours and,
 b. At a depth of more than 12 inches over an area of more than 0.1 acre.
 The normal 24-hour call to NMED Surface Water is presumed to meet the requirement for a 24-hour notification to the GWQB. The Collection Section Manager shall be notified and shall be responsible for preparing the following additional reporting:
 1. One week written report. Presumed the same as the five day report provided to NMED Surface Water.
 2. 15-day Corrective Action Report.

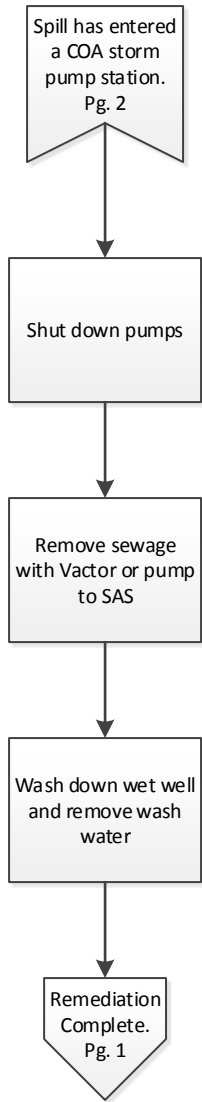


Overflow Emergency Response Plan

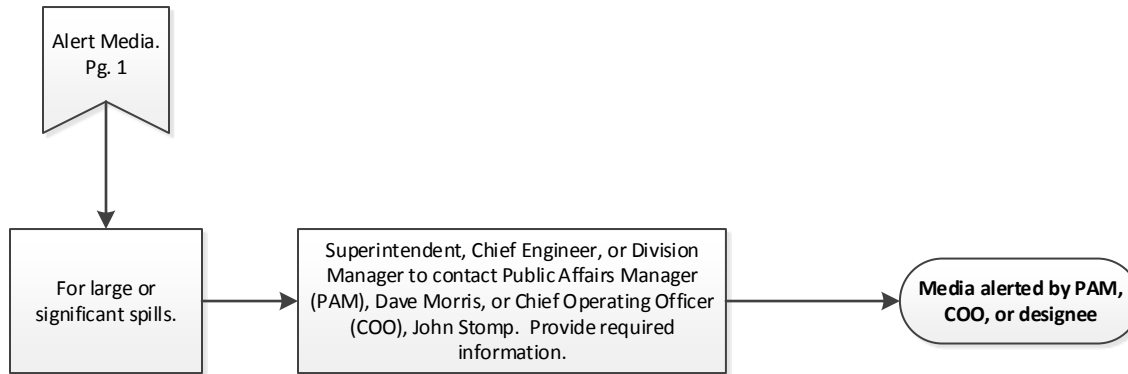
4-14-17

Albuquerque Bernalillo County Water Utility Authority





Note: Process shown is for typical spills. Some spills may require a joint response with the City of Albuquerque in which the spill is captured, treated, and determined appropriate for release.



Overflow Emergency Response Plan

4-14-17

Albuquerque Bernalillo County Water Utility Authority

